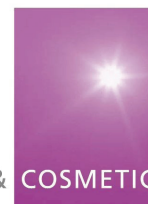




THE DENTAL & COSMETIC CLINIC



THE DENTAL & COSMETIC CLINIC

- Members will be offered a further 20% reduction off additional aesthetic treatments and therapies (excluding special offers and promotions; T&Cs apply)
- Selected plan entitles members to receive treatments specified at intervals following payment of initial course of treatment
- Entitlement is determined from the date of the second treatment and provided payments remain
- Members may change the area treated within their plan entitlement
- Individual additional areas may be taken at the time of treatment, subject to payment in full at the time of treatment. Fees will be reduced by 20% provided membership payments are up to date
- Failure of the Direct Debit payment will invalidate member entitlements
- Privilege Plan are the administrators of the plan and their name will appear on your bank statement
- Please note a £10.00 administration fee is charged at the first month's payment.



Cosmetic Membership

The Cosmetic and Dental Clinic

14 Saffron Road
South Wigston
Leicester
LE18 4TD

0116 2785611

info@dentalandcosmeticclinic.co.uk

www.dentalandcosmeticclinic.co.uk

BDA Good Practice
CELEBRATING 7 YEARS Member



You want to maintain your look throughout the year, and budget for your aesthetic regime - now you can relax with our new Cosmetic Membership. It's affordable and discreet – quite simply it's a beautiful way to maintain the look you want.

Great reasons to join our Cosmetic Membership:

- Pay a monthly Direct Debit to cover the cost of your ongoing treatment
- 20% reduction in the cost of any additional therapies including dermal filler treatments



Cosmetic Membership is as easy as 1 2 3.

1. Choose the membership that meets your personal requirements
2. Pay for an initial course of treatment
3. Pay monthly by Direct Debit for four treatments per year (every three months following an initial course of treatment).



Cosmetic Complete Membership

provides a range of treatments for ultimate facial rejuvenation

Plan 1 £35.75 per month for one facial area of treatment every 3 months, saving you £351.00 per year

Plan 2 £55.00 per month for two facial areas of treatment every 3 months, saving you £520.00 per year

Plan 3 £65.00 per month for three facial areas of treatment every 3 months, saving you £620.00 per year

Example of treatment of one area include; frown lines, or forehead lines, or crow's feet

Cosmetic Elite Membership

provides dermal fillers

Plan 1 £26.75 per month for one course of treatment every nine months to treat lines, wrinkles and folds on face, neck or hands, for example marionette lines, smokers lip lines, deep facial creases, saving you £59.25 every nine-month treatment

Plan 2 £31.10 per month for one course of treatment every nine months to provide volume to any region, for example cheek, chin or jaw augmentation or tear trough fillers, saving you £70.10 every nine-month treatment

Plan 3 £46.65 per month for one course of treatment every six months to provide beautifully enhanced lip volume, saving you £140.20 per year

You can add additional syringes to any course of treatment and enjoy a member's reduction of 20% or you can discreetly increase the level of your treatments with a supplementary monthly payment of £22.20 per month for each additional syringe (20% discount is applied).